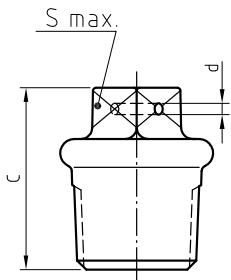


294

TAPPO CON BUCO NEL DADO



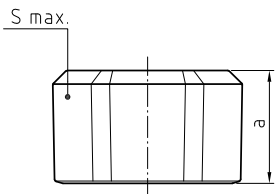
MISURA	CODICE	DIMENSIONI (mm)			Peso (gr)
		c	S. máx.	d	
1/2"	29401/5003	32	11	4	40
3/4"	29401/5004	34	16	4	77
1"	29401/5005	37	19	5	109
1 1/4"	29401/5006	41	21	5	185
1 1/2"	29401/5007	46	20	5	217
2"	29401/5008	50	27	5	326

1/5 - 1= Nera - 5= Zincata

300

(T1)

TAPPO



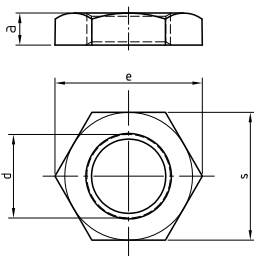
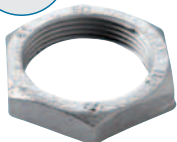
MISURA	CODICE	DIMENSIONI (mm)		Peso (gr)
		a	S.máx.	
1/8"	30011/5000	13	15	16
1/4"	30011/5001	15	18	23
3/8"	30011/5002	17	22	37
1/2"	30001/5003	19	26	45
3/4"	30001/5004	22	32	78
1"	30001/5005	24	39	102
1 1/4"	30001/5006	27	48	156
1 1/2"	30001/5007	27	54	185
2"	30001/5008	32	66	326
2 1/2"	30001/5009	35	84	531
3"	30001/500A	38	96	942
4"	30001/500C	45	123	1841

1/5 - 1= Nera - 5= Zincata

310

(P4)

CONTRO DADO



MISURA d	CODICE	DIMENSIONI (mm)			Peso (gr)
		a	e aprox.	s	
1/4"	31011/5001	6	22	19	14
3/8"	31001/5002	8	28	24	20
1/2"	31001/5003	8	37	32	32
3/4"	31001/5004	9	42	36	38
1"	31001/5005	10	53	46	72
1 1/4"	31001/5006	11	62	54	95
1 1/2"	31001/5007	12	68	60	116
2"	31001/5008	13	86	75	199
2 1/2"	31001/5009	19	110	95	430
3"	31001/500A	22	120	105	538

1/5 - 1= Nera - 5= Zincata