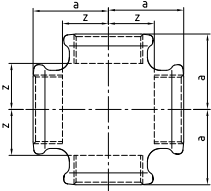
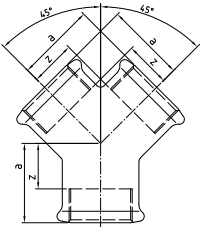


180
(C1)
CROCE


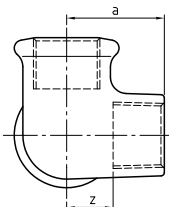
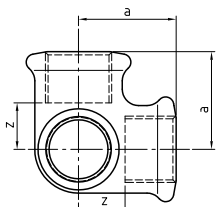
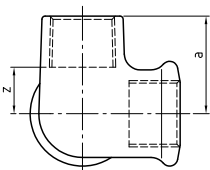
| MISURA | CODICE | DIMENSIONI (mm) | | Peso (gr) |
|--------|------------|-----------------|----|-----------|
| | | a | z | |
| 1/4" | 18001/5001 | 21 | 11 | 59 |
| 3/8" | 18001/5002 | 25 | 15 | 111 |
| 1/2" | 18001/5003 | 28 | 15 | 167 |
| 3/4" | 18001/5004 | 33 | 18 | 241 |
| 1" | 18001/5005 | 38 | 21 | 372 |
| 1 1/4" | 18001/5006 | 45 | 26 | 557 |
| 1 1/2" | 18001/5007 | 50 | 31 | 793 |
| 2" | 18001/5008 | 58 | 34 | 935 |
| 2 1/2" | 18001/5009 | 69 | 42 | 1455 |
| 3" | 18001/500A | 78 | 48 | 2160 |
| 4" | 18001/500C | 96 | 60 | 3980 |

1/5 - 1= Nera - 5= Zincata

220
DISTRIBUTORE A Y


| MISURA | CODICE | DIMENSIONI (mm) | | Peso (gr) |
|--------|------------|-----------------|----|-----------|
| | | a | z | |
| 3/8" | 22001/5002 | 24 | 14 | 100 |
| 1/2" | 22001/5003 | 27 | 14 | 124 |
| 3/4" | 22001/5004 | 33 | 18 | 189 |
| 1" | 22001/5005 | 40 | 23 | 290 |

1/5 - 1= Nera - 5= Zincata

221
(Za1)
DISTRIBUTORE A GOMITO


| MISURA | CODICE | DIMENSIONI (mm) | | Peso (gr) |
|--------|------------|-----------------|----|-----------|
| | | a | z | |
| 3/8" | 22101/5002 | 25 | 15 | 102 |
| 1/2" | 22101/5003 | 28 | 15 | 92 |
| 3/4" | 22101/5004 | 33 | 18 | 158 |
| 1" | 22101/5005 | 38 | 21 | 228 |
| 1 1/4" | 22101/5006 | 45 | 26 | 485 |
| 1 1/2" | 22101/5007 | 50 | 31 | 575 |
| 2" | 22101/5008 | 58 | 34 | 826 |

1/5 - 1= Nera - 5= Zincata